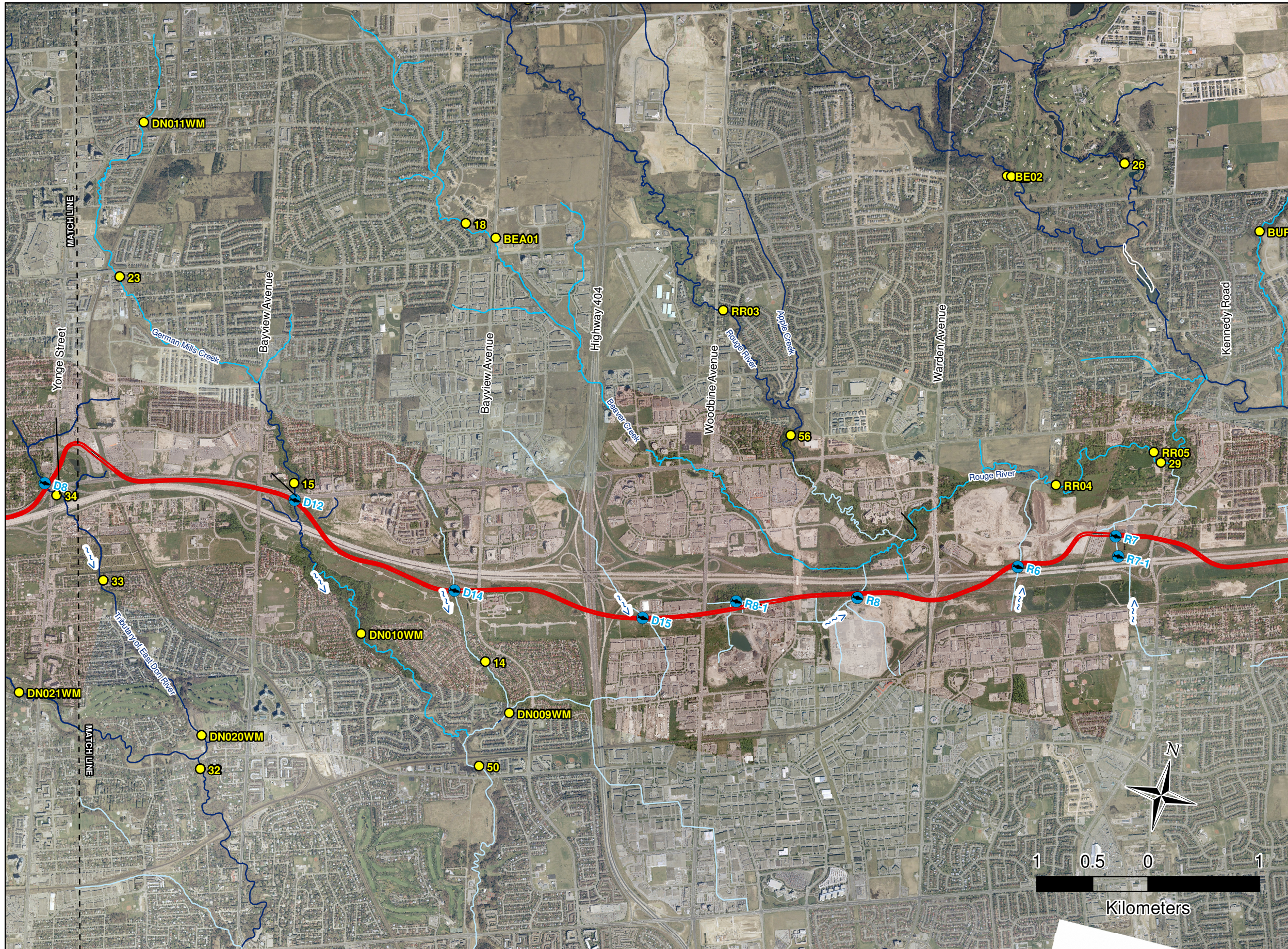


**TABLE 1.  
 FISH HABITAT ASSESSMENT SUMMARY**

Reference Number	Waterbody Name	GPS Location	Type of Crossing	Fish Community	Habitat Summary		Flow Conditions	Drainage Connectivity	Comments
					Upstream	Downstream			
D12	German Mills Creek	0628433 4855296	large CSP under Hwy 7 and bridge under Hwy 407	coldwater	<ul style="list-style-type: none"> <li>natural channel</li> <li>good morphology - riffles</li> <li>riparian vegetation - trees and shrubs of maple, willow, sumac and poplar</li> <li>well shaded with mature trees and shrubs</li> <li>substrate - cobble, concrete rubble and debris</li> <li>flood debris and bank erosion</li> </ul>	<ul style="list-style-type: none"> <li>natural channel</li> <li>good morphology - riffles and runs</li> <li>riparian vegetation - grasses, willow and lilac shrubs</li> <li>moderate shading - trees</li> <li>substrate - silt, fine gravel and cobble</li> <li>no erosion - banks stabilized with boulders/rock protection</li> </ul>	permanent	good	<ul style="list-style-type: none"> <li>year round flow</li> </ul>
D14	Tributary 1 of German Mills Creek	0630039 4854838	open bottom concrete culvert; backfilled	warmwater	<ul style="list-style-type: none"> <li>channelized</li> <li>riparian vegetation – trees, shrubs and grasses</li> <li>shade 30 - 60 %</li> <li>substrate - cobble and gravel</li> <li>no erosion - banks stabilized</li> </ul>	<ul style="list-style-type: none"> <li>channelized</li> <li>riparian vegetation - grasses, shrubs and cattails</li> <li>some shade 0 – 30 %</li> <li>substrate - gravel and cobble</li> <li>no erosion – banks stabilized</li> </ul>	permanent	good	<ul style="list-style-type: none"> <li>year round flow</li> <li>fish observed</li> <li>cattail marsh downstream near proposed station location</li> </ul>
D15	Tributary 2 of German Mills Creek	0631739 4855062	concrete box culvert	warmwater	<ul style="list-style-type: none"> <li>cattail swale</li> </ul>	<ul style="list-style-type: none"> <li>cattail swale</li> </ul>	intermittent	poor	<ul style="list-style-type: none"> <li>channel is choked with cattails upstream and downstream</li> <li>seasonal swale</li> <li>golf course upstream has interrupted flow</li> </ul>
R8	Tributary of Beaver Creek	0633530 4855652	culvert	warmwater	<ul style="list-style-type: none"> <li>good morphology, runs, flats and pools</li> <li>some shade 0 – 30 %</li> <li>instream cover – undercut banks, submerged grasses, woody debris</li> <li>substrate – mud and silt</li> <li>riparian vegetation – grasses, shrubs and some trees</li> <li>banks slightly unstable</li> </ul>	<ul style="list-style-type: none"> <li>good morphology, runs, flats and pools</li> <li>little shade, overhanging grasses</li> <li>instream cover – undercut banks, submerged grasses</li> <li>substrate – mud and silt</li> <li>riparian vegetation – grasses and shrubs</li> <li>banks slightly unstable</li> </ul>	permanent	good	<ul style="list-style-type: none"> <li>small stream flowing in from southwest</li> <li>channel realigned from east (upstream) around hydro facility</li> </ul>
R8-1	Tributary of R8	0632556 4855390	culvert/open channel	warmwater	<ul style="list-style-type: none"> <li>channelized; poor morphology</li> <li>riparian vegetation – sparse grasses, cattails and shrubs</li> <li>poor canopy cover</li> <li>substrate consist of fine material</li> </ul>	<ul style="list-style-type: none"> <li>channelized; poor morphology</li> <li>riparian vegetation – tree cover to the north and open field/herbaceous to south</li> <li>substrate consist of fine material</li> </ul>	intermittent	good	<ul style="list-style-type: none"> <li>intermittent flow</li> <li>channelized watercourse</li> </ul>
R6	Markham Centre Tributary of the Lower Rouge River	0635023 4856614	concrete box culvert	warmwater	<ul style="list-style-type: none"> <li>channelized; poor morphology</li> <li>riparian vegetation – sparse grasses and herbs</li> <li>no shade substrate – muck</li> <li>rock gabion weir just downstream of Hwy 407, acting as a permanent barrier to migration</li> </ul>	<ul style="list-style-type: none"> <li>channelized; poor morphology</li> <li>riparian vegetation - sparse grasses and herbs</li> <li>no shade substrate - muck</li> <li>cattail and filamentous green algae in storm water pond</li> </ul>	permanent	good	<ul style="list-style-type: none"> <li>stream realigned eastward</li> <li>fish observed</li> <li>weir acting as migration barrier</li> </ul>
R7	Kennedy Tributary of the Lower Rouge River	0635626 4856859	twin-CSP	warmwater	<ul style="list-style-type: none"> <li>no defined channel</li> <li>riparian vegetation – sparse grasses and cattails</li> <li>no shade</li> </ul>	<ul style="list-style-type: none"> <li>no defined channel</li> <li>riparian vegetation – sparse grasses and cattails</li> <li>no shade</li> </ul>	ephemeral		
R7-1	Kennedy Tributary of the Lower Rouge River	0635729 4856605	CSP	coolwater	<ul style="list-style-type: none"> <li>no defined channel</li> <li>riparian vegetation – grasses and cattail</li> <li>meadow marsh type ecology</li> </ul>	<ul style="list-style-type: none"> <li>no defined channel</li> <li>riparian vegetation – grasses and cattail</li> <li>meadow marsh type ecology</li> </ul>	ephemeral	low	



Data Source: LGL Limited field surveys, Ontario Ministry of Natural Resources.

**407 TRANSITWAY  
(EAST END)  
FISHERIES**



<b>Project:</b> TA4485	<b>Figure:</b> 2B
<b>Date:</b> January 2010	<b>Prepared By:</b> KDT
<b>Scale:</b> 1 : 35000	<b>Checked By:</b> CJA